

Recommended Configuration Plan for Grade Crossing Warning Devices With One or More Tracks With Two Quadrant Gates or Four Quadrant Gates at a Crossing With a Center Turn Lane
 Revised 2025 (5 Pages)

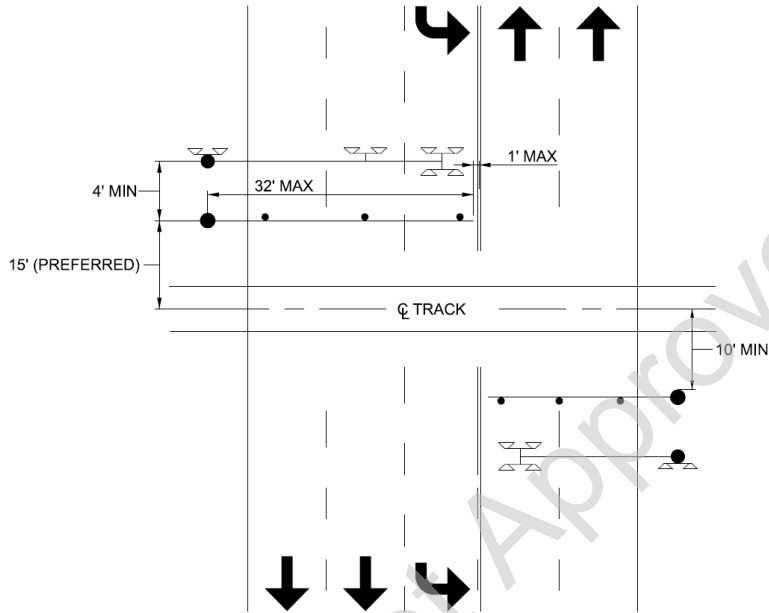


Figure 3136M-1: Dedicated Single Direction Turn Lane and Cantilevered Flashing Light Warning Devices with Gates
 See Notes on Page 5.

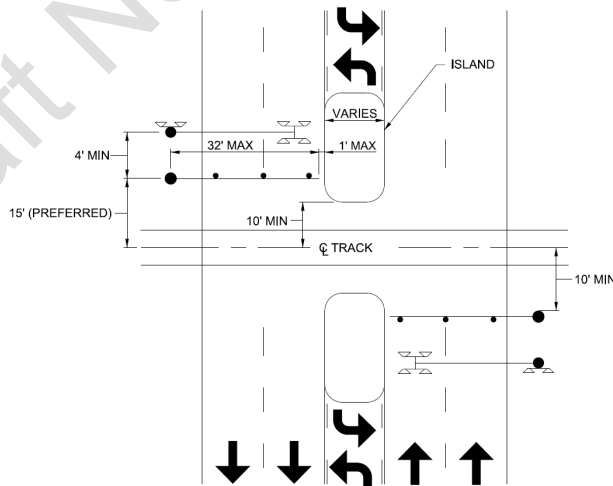


Figure 3136M-2: Raised Median and Cantilevered Flashing Light Warning Devices with Gates
 See Notes on Page 5.

Part 3.1.36M
2025

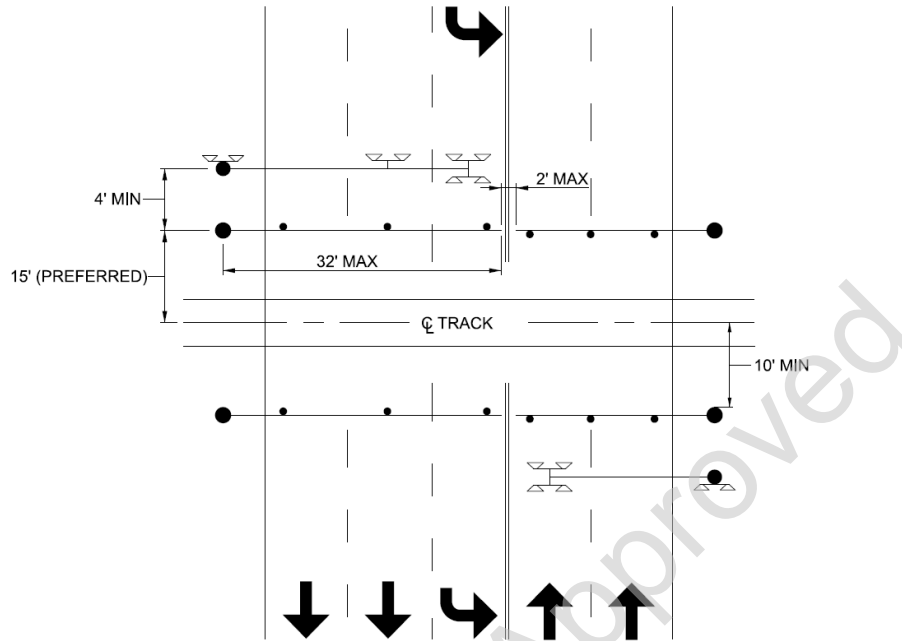


Figure 3136M-3: Dedicated Single Direction Turn Lane and Cantilevered Flashing Light Warning Devices with Four Quadrant Gates
See Notes on Page 5.

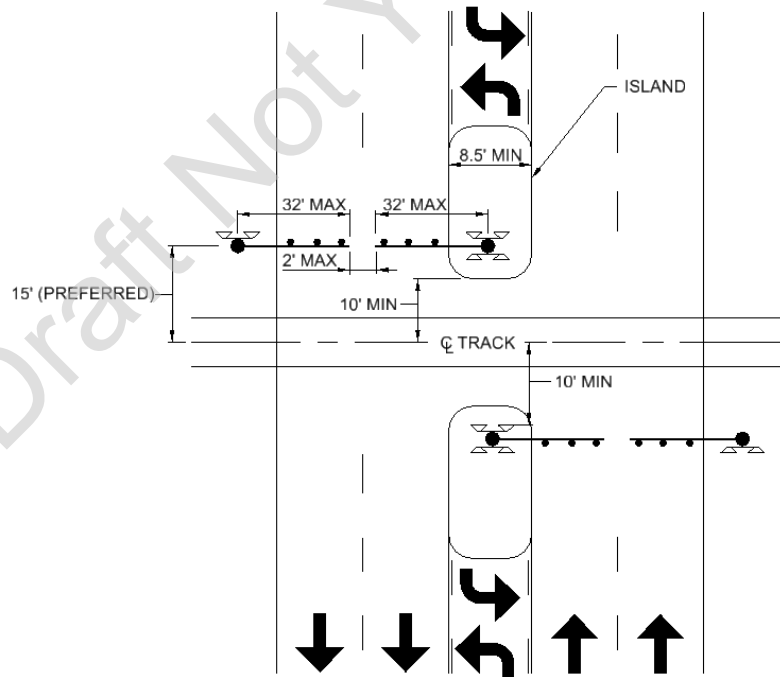


Figure 3136M-4: Raised Median and Mast Mounted Flashing Light Warning Devices with Split Gates
See Notes on Page 5.

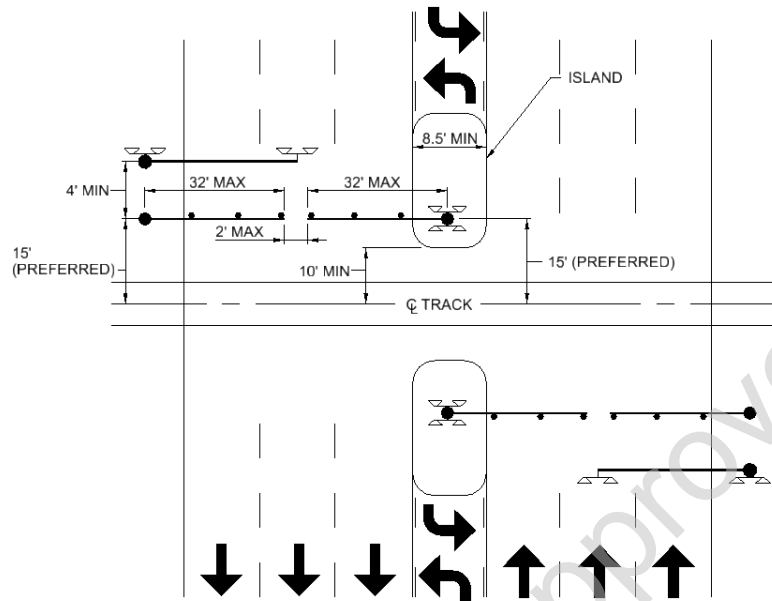


Figure 3136M-5: Raised Median and Turn Lane and Cantilevered Flashing Light Warning Devices with Split Gates
See Notes on Page 5.

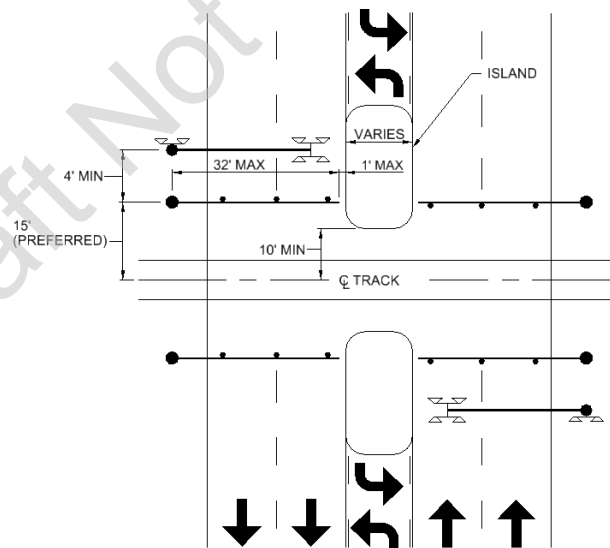


Figure 3136M-6: Raised Median and Turn Lane and Cantilevered Flashing Light Warning Devices with Four Quadrant Gates
See Notes on Page 5.

Part 3.1.36M
2025

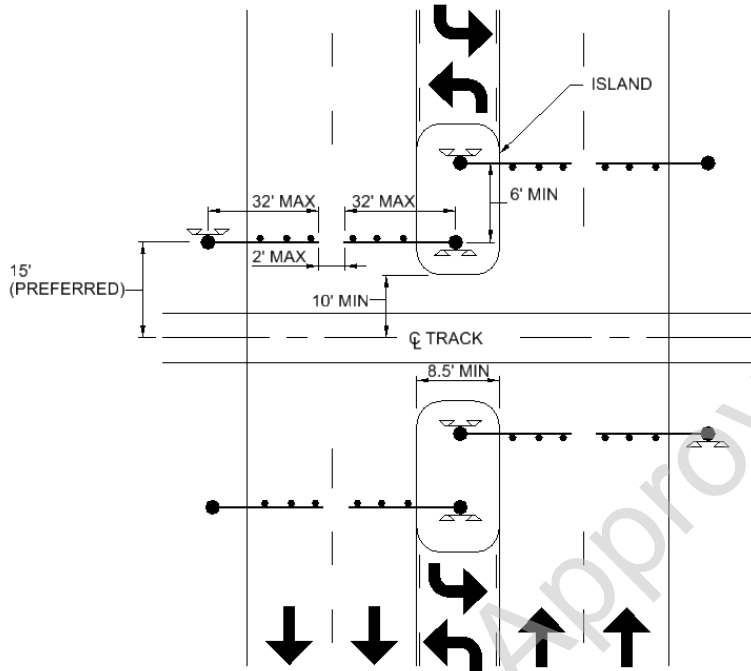


Figure 3136M-7: Curbed Median and Mast Mounted Flashing Lights with Four Quadrant Split Gates
See Notes on Page 5.

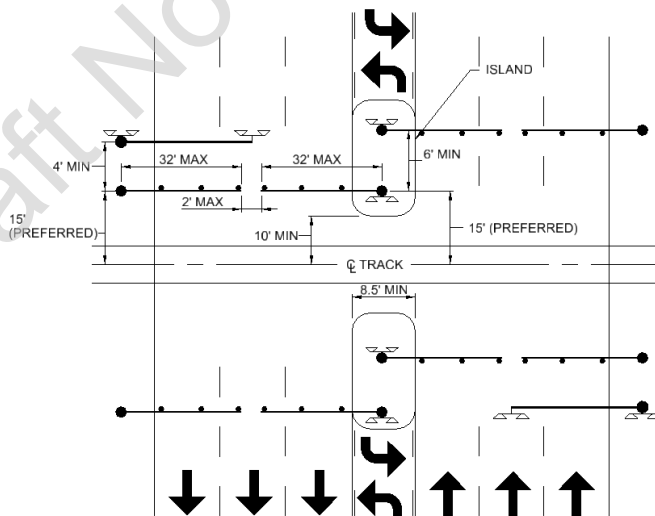


Figure 3136M-8: Curbed Median and Cantilevered Flashing Light Warning Devices with Four Quadrant Split Gates
See Notes on Page 5.

Notes:

1. See Manual Part 3.1.36 Recommended Functional Guidelines for Configuration Plans for Grade Crossing Warning Devices for additional information.
2. Maximum gate arm length is 32 ft (9.75 m).
3. Bi-directional turn lanes should follow MUTCD or Transport Canada Grade Crossings Standards as applicable.
4. For this section, an island is a defined area between traffic lanes for control of vehicular movements. It includes all end protection and approach treatments. Within an intersection area, a median or an outer separation is considered to be an island.
5. For this section, a median is the area between two roadways of a divided highway measured from edge of traveled way to edge of traveled way. The median excludes turn lanes. The median width might be different between intersections, interchanges, and at opposite approaches of the same intersection.